

# FOUNDATION

STAMFORD QUARTER, ALTRINCHAM



bruntwood × TRAFFORD  
COUNCIL



# REBORN, REIMAGINED & RECONNECTING OUR TOWN



**Once a paradise for buying and selling, this old department store served Altrincham well. But times have changed. The Stamford Quarter needs a place designed for a community, a place where work and lifestyle thrive.**

Foundation marks a transformative new chapter for the Stamford Quarter creating a welcoming connection to Altrincham's thriving town centre.

This is a rebirth — as master reinventors, we are reinvesting in the building rather than knocking it down. Our repurposing and re-envisioning of this local landmark brings together its history with the future, through a series of leased workspaces with outdoor terraces, supported by an evolving hub of retail, leisure, and community uses.

A complete ground floor redesign provides shops and hospitality that spill out onto Stamford Square, creating a unique arrival experience. It's a place where people can meet, eat, drink, and immerse themselves in a range of arts, cultural and wellbeing events.

Inside, the ground floor arrival experience provides a warm welcome. There's a cafe, host and coworking area to provide an exciting environment for freelancers and start-ups wishing to work in the town centre.

Foundation will be a place that actively enhances work life balance and improves the wellbeing of its communities. A redevelopment of the basement will provide a few extras to really help you settle in. With a dedicated free to use studio, bike storage and showers as well as drying and changing facilities, you'll have all the tools at your disposal for active commuting.

With sustainability in mind, we will be introducing a 375 sqm HYVERT living wall as part of a live science study with I Want Plants and Joseph Rouse, Scientific Research and Development Lead at Manchester Metropolitan University. The study will monitor, record and accurately measure carbon levels and absorption both prior to HYVERT installation and afterwards.

**This is**

**FOUNDATION**







# ALTRINCHAM

TRAVELODGE

NHS HEALTH &  
HEALTH & WELLBEING  
CENTRE & LIBRARY

EVERYMAN CINEMA

ALTRINCHAM MARKET &  
MARKET SQUARE

TOWN HALL

TESCO EXTRA

STAMFORD  
QUARTER

PLANET ICE

ALTRINCHAM  
INTERCHANGE  
SERVICES TO  
MANCHESTER

STAMFORD  
SQUARE

ALTAIR

FOUNDATION

STATION HOUSE

## TRANSPORT



METROLINK



NATIONAL RAIL



BUS SERVICES

Altrincham Interchange is just  
100 feet away providing rail,  
Metrolink and bus links.



THIS IS  
WHERE  
YOU **WORK**







# Leased offices

Our leased offices are for companies that want to personally build a work environment in their own image.

We provide the space and place in the Bruntwood community, but the rest is completely down to you. It's a blank canvas for your business, ready to customise to your liking.

Our leased spaces are taken on a price per sq ft basis. Bring your own furniture. Manage your own bill payments. Brand your surroundings as you see fit.

## Key features



Unfurnished private offices for you to customise



Flexibility to upscale or downsize



From £26.50 per sq ft

## Optional upgrades:

Taking a leased office on a Made & Managed basis is ideal for those who want design and management taken care of.



Private bespoke offices designed and managed by us



Customisable monthly fee covering rent and fit out with no upfront costs



Our in-house design team will create a bespoke workspace for your team



# Floor plans

LOWER GROUND FLOOR



GROUND FLOOR



INDICATIVE



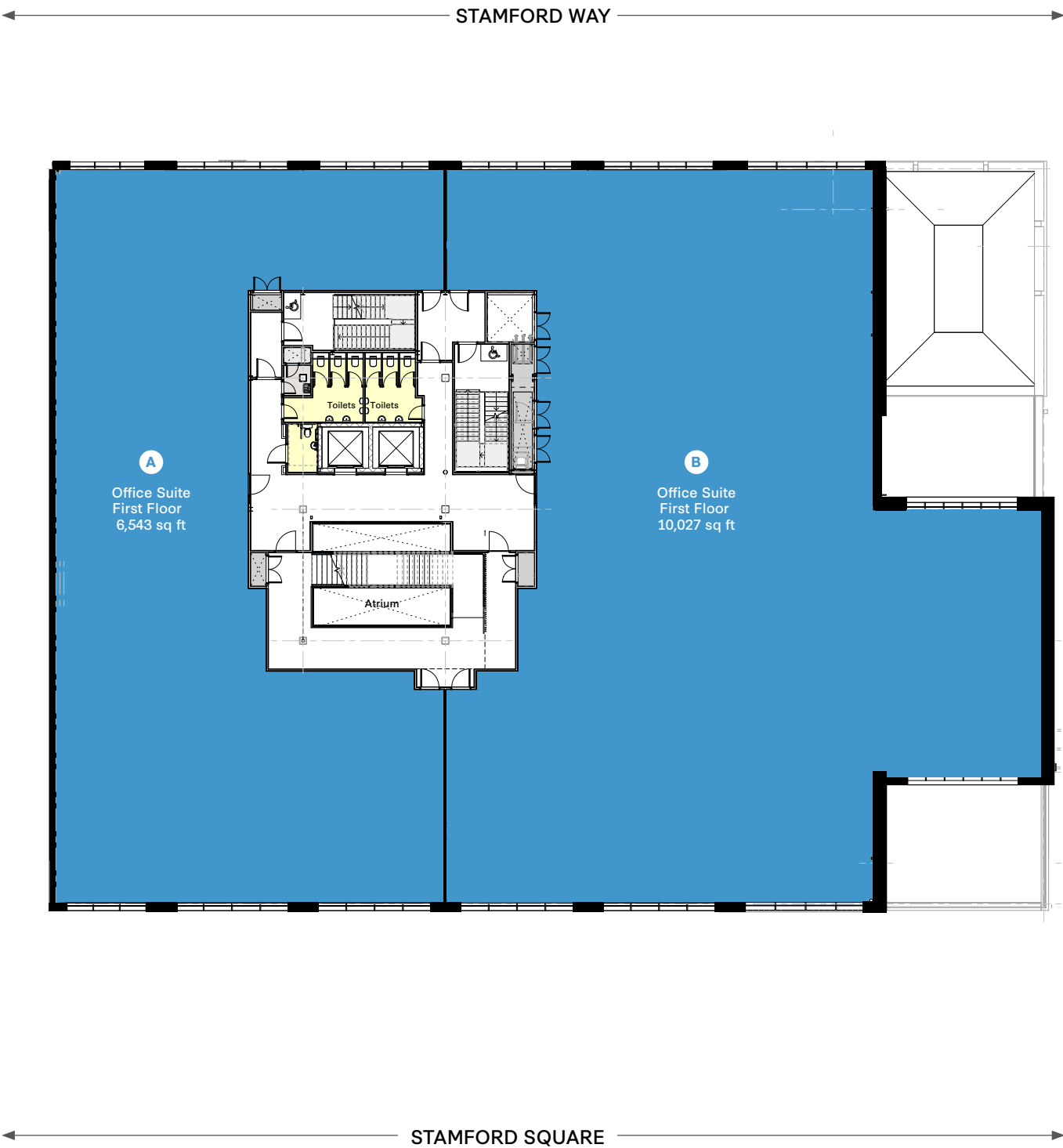


Second floor terrace (indicative view)



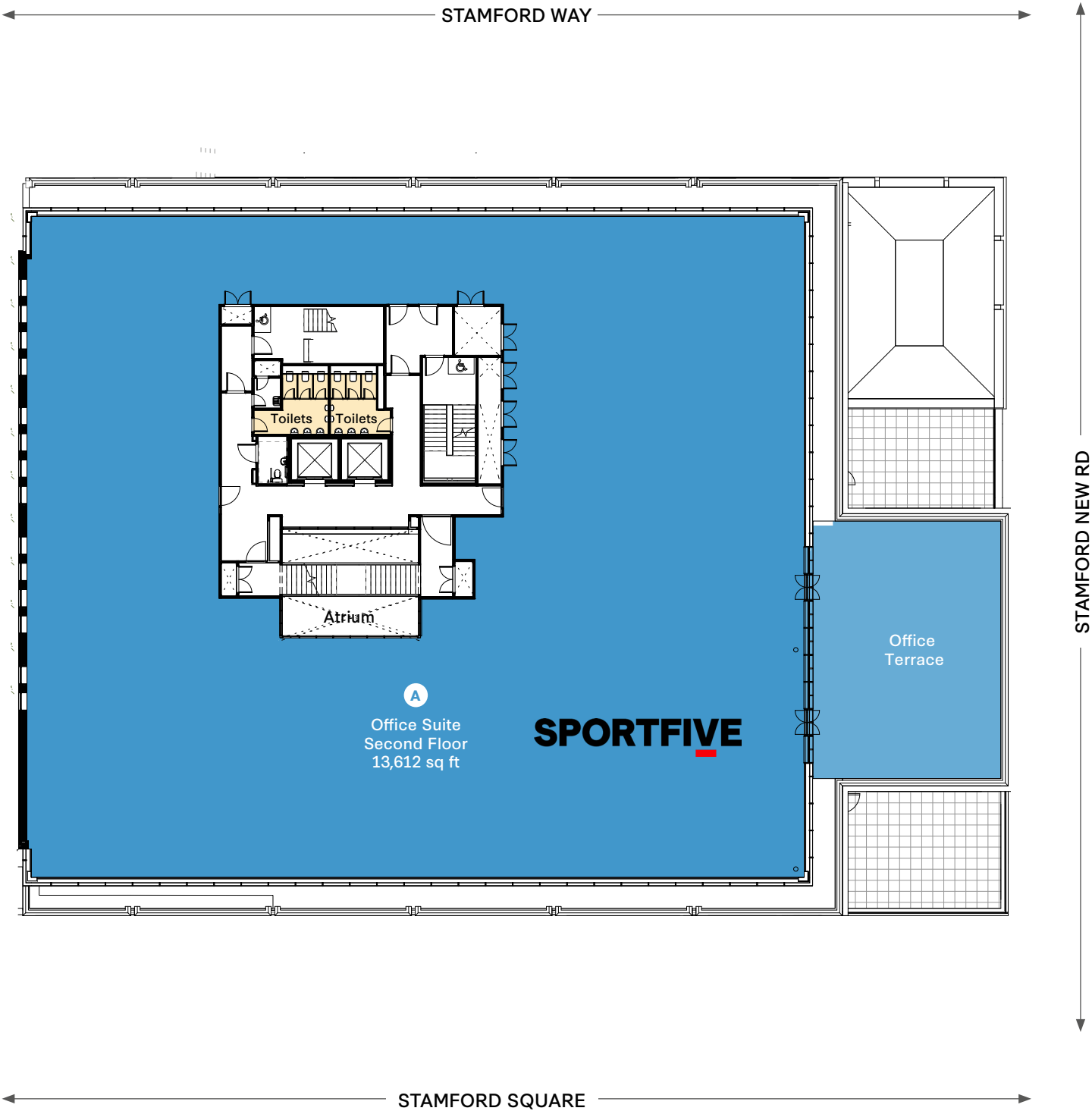
# Floor plans

FIRST FLOOR



INDICATIVE

SECOND FLOOR



INDICATIVE





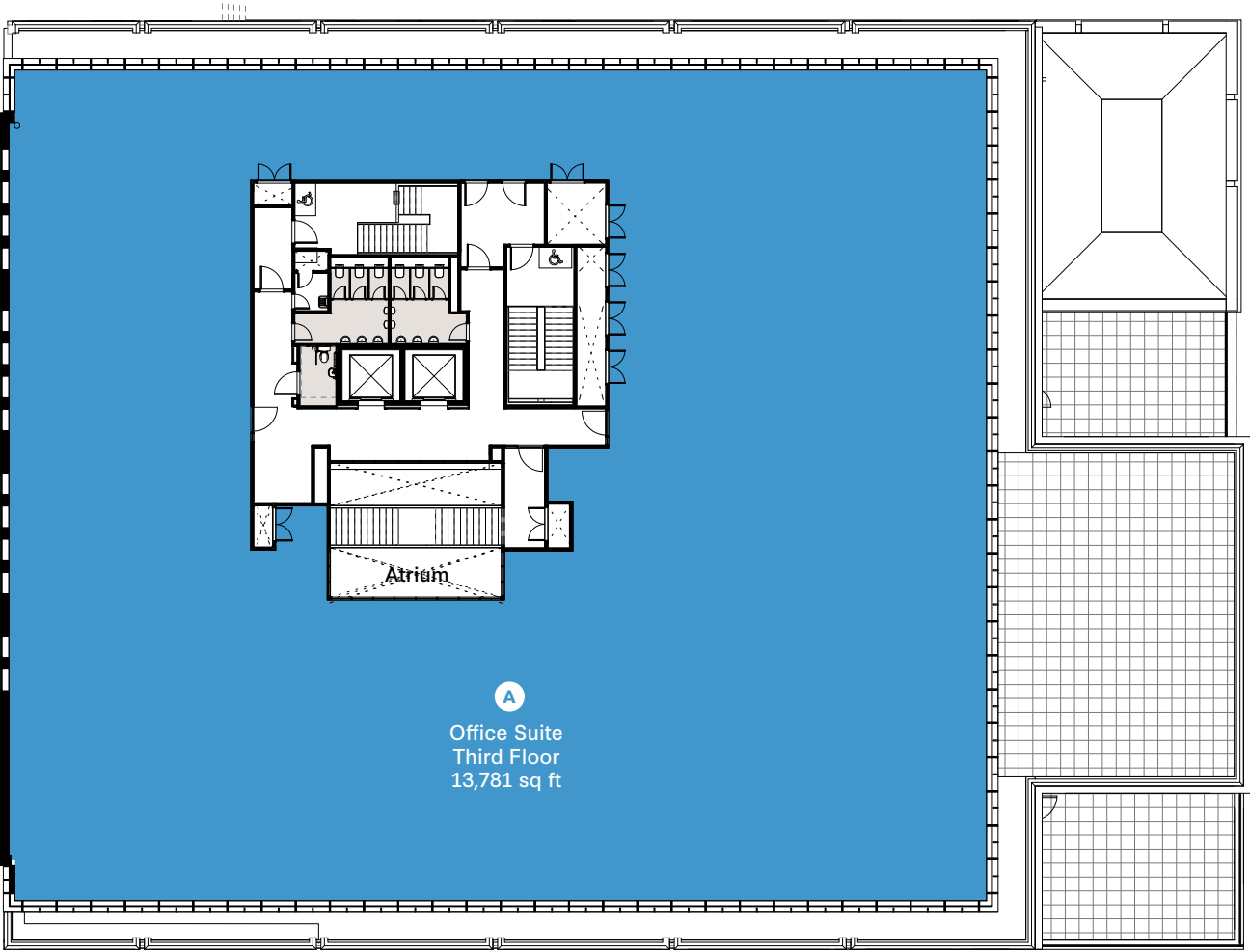
Third floor CGI (indicative view)



# Floor plans

INDICATIVE - THIRD FLOOR

STAMFORD WAY



STAMFORD SQUARE

INDICATIVE



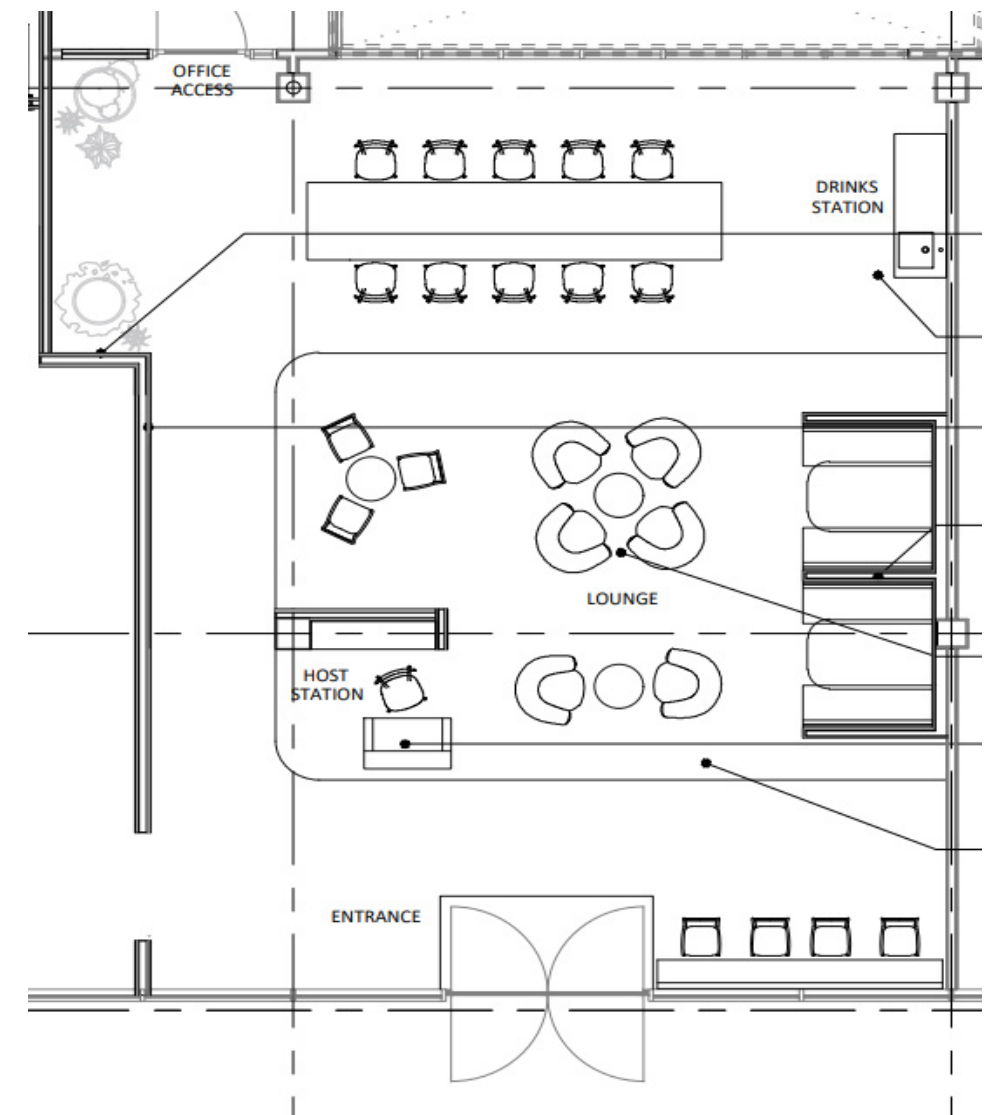
CGI 3rd floor commonparts



# THIS IS WHERE YOU COLLABORATE



## RECEPTION & CAFE



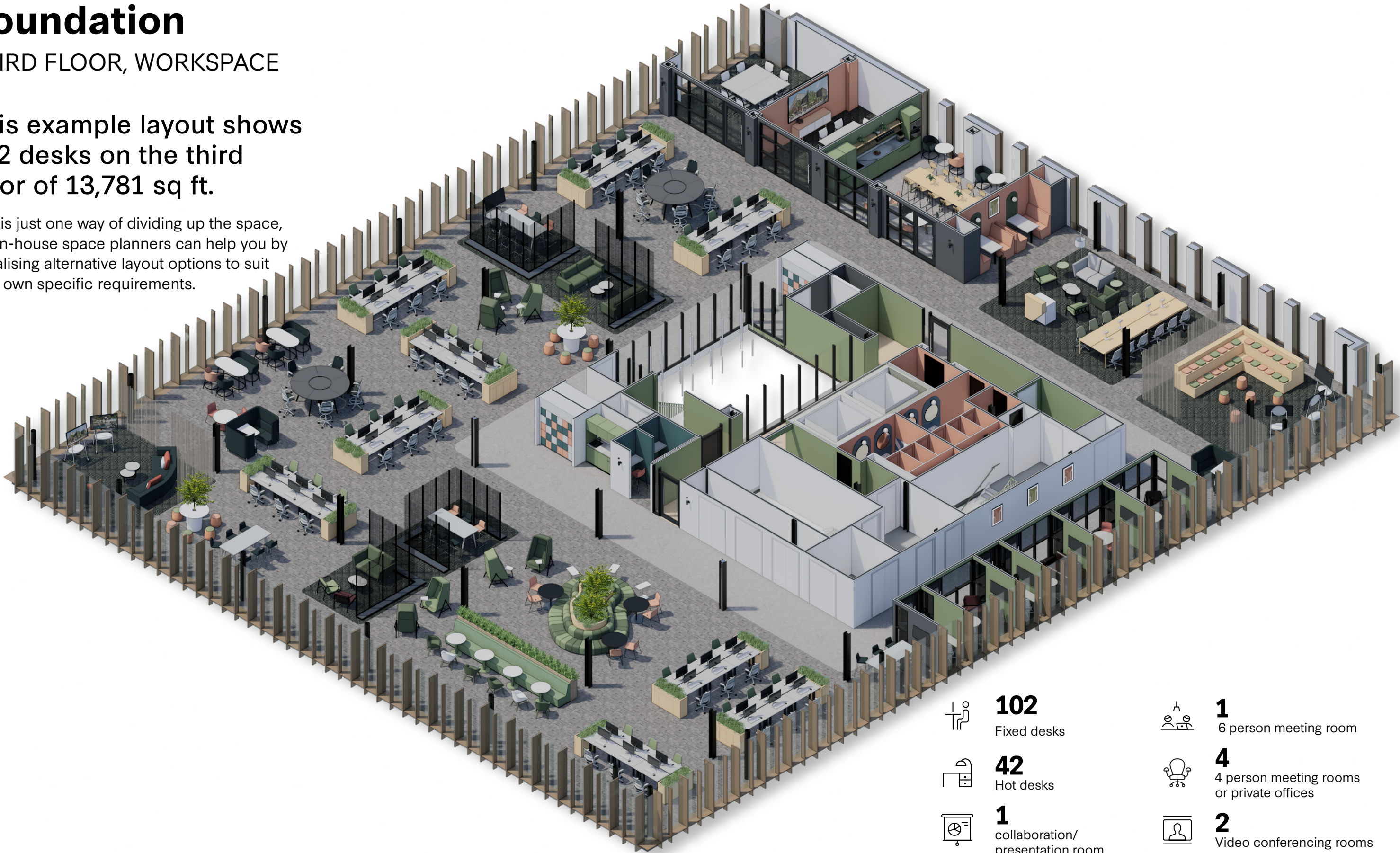



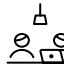


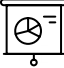




# Foundation

## THIRD FLOOR, WORKSPACE

This example layout shows 102 desks on the third floor of 13,781 sq ft.

This is just one way of dividing up the space, our in-house space planners can help you by visualising alternative layout options to suit your own specific requirements.



- |   |  |   |   |
|---|--|---|---|
|  | <b>102</b><br>Fixed desks                                |  | <b>1</b><br>6 person meeting room                     |
|  | <b>42</b><br>Hot desks                                   |  | <b>4</b><br>4 person meeting rooms or private offices |
|  | <b>1</b><br>collaboration/ presentation room             |  | <b>2</b><br>Video conferencing rooms                  |
|  | <b>1</b><br>35 person bleacher seating presentation area |  | <b>2</b><br>Kitchen & breakout spaces                 |
|  | <b>1</b><br>8 person meeting room                        |   |   |



# THIS IS WHERE YOU FLEX

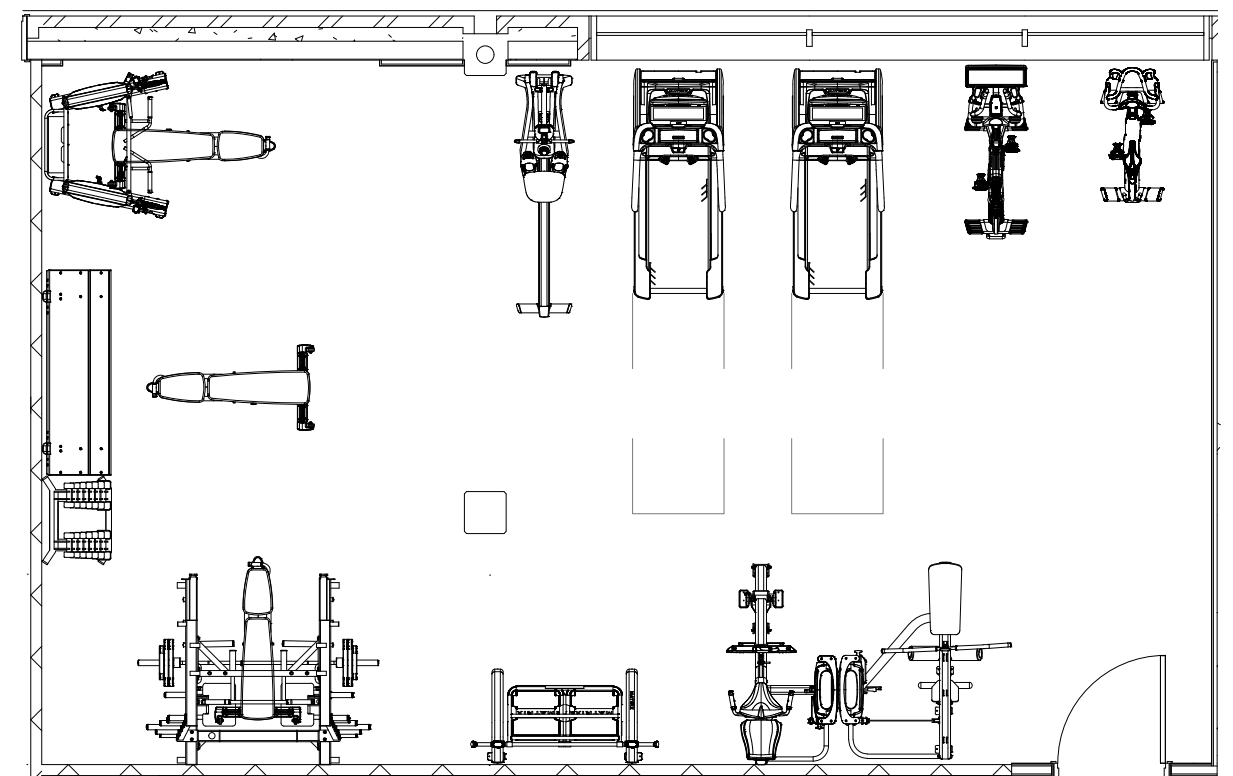


**At Bruntwood, we know it's often the little things that matter so we have provided a few extras to really help you settle in.**

With a dedicated free to use fitness studio, bike storage and showers as well as

drying and changing facilities, you'll have all the tools at your disposal for active commuting.

## **FITNESS STUDIO FLOOR PLAN**







# THIS IS ALTRINCHAM

  
**THE SUNDAY TIMES**

Best In Britain 2020 and,  
Best Place to Live in the  
North West 2022



# THE VISION FOR STAMFORD QUARTER



CGI for indicative purposes



CGI for indicative purposes

Reinvigorating the high street, connecting people, building community and improving public spaces at the heart of Altrincham.

The next wave of Altrincham's evolution is being led by Bruntwood and Trafford Council who are investing **£15m** into the town centre and Stamford Quarter.

Significant investment will provide a multi-functional experiential centre comprising retail, leisure, workspace and residential spaces, creating a dynamic town centre hub.

The retail and leisure offer will evolve with an eclectic mix of uses, blending best in class national, aspirational and independent concepts.

Food and beverage will be introduced to create dwell time, also supporting the nighttime economy in the square.

Workspace will also feature on the high street, adding to Stamford Quarter's footfall and the vibrancy of the town centre.







# STAMFORD SQUARE



We're breathing new life into Stamford Square to establish the Stamford Quarter as the key gateway to the town. Stamford Square is the largest pedestrianised square in Altrincham and sits at the heart of the public realm and will become a cultural destination in its own right.

This ongoing vision, including an improved pedestrian and cycle environment, provides an opportunity to become a playful, flexible community hub that can be programmed with events to maximise its potential.





# WORKING IN ALTRINCHAM



## Nearby amenities

### LEISURE

- 1 Everyman Cinema
- 2 Vue Cinema
- 3 Plant Ice
- 4 Altrincham Leisure Centre
- 5 PureGym
- 6 Total Fitness
- 7 Orange Theory Fitness

### CAFE CULTURE

- 1 BlanchFlower
- 2 Common Ground
- 3 Toast Altrincham
- 4 Two Brothers Coffee
- 5 gail's bakery

### SHOPPING

- 1 Next
- 2 H&M
- 3 M&S
- 4 Sostrene Grene
- 5 River Island
- 6 Tesco
- 7 Flannels

### BARS

- 1 Riddles
- 2 Mort Subite
- 3 Pi
- 4 The Cellar
- 5 Cheshire Tap
- 6 Malt Shovels
- 7 Old Roebuck
- 8 Orange Tree
- 9 Old Market Tavern

### RESTAURANTS

- 1 SUD pasta
- 2 Porta
- 3 Tre Ciccio
- 4 The Con Club
- 5 Yara
- 6 Libero
- 7 WowYauChow
- 8 Oppio Lounge



**30**  
second walk to  
Altrincham transport  
interchange



**25**  
to Manchester City  
centre via Metro link



**12**  
minute drive  
to Manchester  
Airport





# WHERE WORK & LIFESTYLE THRIVE



**Bruntwood balances work and life, blending spaces that encourage interaction and create community.**

Our focus is around two key areas, creating unique workspaces and providing thriving retail and leisure spaces. Both are design led, people driven and socially responsible. We continue to be firmly embedded in our towns and cities, with a strong presence in the North West, Yorkshire and the Midlands.

As well as a unique opportunity to broaden the influence of Bruntwood, we know the more diverse, culturally rich, healthy, educated, connected, sustainable and fulfilled our communities are, the greater our towns and cities will become.



In line with the Misrepresentation Act 1967, Unfair Contract Terms Act 1977 and The Property Misdescriptions Act 1991, Bruntwood Limited gives notice that:

1. These particulars are a general outline only, for the guidance of prospective purchasers or customers, and do not constitute the whole or any part of an offer or contract.
2. Bruntwood Limited cannot guarantee and accepts no liability whatsoever for the accuracy of any description, dimensions, references to condition, necessary permissions for use and occupation and other details contained herein and prospective purchasers or tenants must therefore not rely on them as agent advisor or other representative statement of fact or representations and must satisfy themselves as to their accuracy.
3. No employee of Bruntwood Limited has any authority to make or give any representations or warranty or enter into any contract whatever in relation to the property.
4. Bruntwood Limited will not be liable, in negligence or otherwise, for any loss arising from the use of these particulars.
5. Space planning contained in this brochure is indicative only and may require modifications to the building design.
6. All floor plans are not to scale and are for identification purpose only.

**Foundation**  
**2 George Street,**  
**Altrincham**  
**WA14 1RN**

For more information please call us  
or visit the website:

**0161 233 7877**  
**bruntwood.co.uk**

FOUNDATION



